

The image shows a modern KONE ProSpace elevator installed in a building's stairwell. The elevator has a dark grey frame and large glass panels. The interior is finished with light-colored wood paneling. To the left of the elevator is a staircase with dark grey steps and a black metal handrail. To the right, another staircase is visible, also with a black metal handrail. The walls are white, and there is a window on the right side. The overall lighting is bright and even.

# SOLUTION FOR BUILDINGS WITHOUT AN ELEVATOR

# THE MOST SPACE-EFFICIENT ELEVATOR SOLUTION ON THE MARKET

An elevator is a necessary part of modern urban living. It adds to the value of a residential building and to the convenience of the people who live there. Having an elevator is a necessity for many elderly people or people with disabilities, but it also makes life easier for parents with children in strollers or people carrying furniture.

The KONE ProSpace™ is a complete elevator solution that can be installed in virtually any building. This space-efficient solution is designed to be installed in the stairwell. The elevator is self-supporting, so it does not put any stress on the building. The elevator requires little space, and no machine room is required, so it is quick to install.

## 1 SPACE-EFFICIENT

The KONE ProSpace elevator is compact, with little space required for headroom or the pit. With a self-supporting shaft, it can be installed without major alterations to the building. The compact elevator, together with a glazed shaft, helps to preserve the original character and function of the staircase.

## 2 SAFE AND CONVENIENT

The KONE ProSpace elevator is equipped with automatic doors in the cars and can have automatic door openers on the landings. The through-type elevator cars make it easy to enter on either the landings or half-landings. It is equipped with voice communication to the 24-hour KONE Customer Care Center.

## 3 ECO-EFFICIENT

Thanks to its low power consumption, small fuse requirements, and low maintenance needs, the KONE ProSpace is economical to use. During installation, the gearing mechanism is greased for lifetime use. So there are no messy oil leaks, no need to change the oil, and no waste oil to dispose of.

## 4 QUICK TO INSTALL

The weight of the elevator is transmitted to the base of the shaft to reduce the load on other parts of the building. This also speeds up the installation process. The KONE ProSpace is usually installed in about two weeks, minimizing the disturbance to residents.

### KEY BENEFITS

- Extremely efficient use of space
- Only 10 cm required for pit
- Low power consumption
- Easy and safe to use
- High-quality, self-supporting shaft construction
- Voice communication from the elevator to the 24-hour KONE Customer Care Center
- Reliable operation, quiet and comfortable to use
- Entirely oil-free solution
- Several design options



With many interior design options, the KONE ProSpace suits the décor of any building.





The KONE ProSpace™ is a complete elevator solution that can be installed in almost any building.



Thanks to the convenience and reliability of this mobility solution, elderly people can continue to live in their homes.



KONE service professionals ensure that installation is completed reliably and on time.



The KONE ProSpace elevator shaft is self-supporting, so it puts no stress on the building walls.

# EASY SELECTION OF CAR INTERIORS

Every building is different, and so is every KONE ProSpace™ elevator. KONE ProSpace shaft can be glazed on all sides in order to let light in and to give the lift a more open character. There are several door choices, including fire-rated doors. For the elevator car, different ceiling, wall and flooring options are available.

## CEILINGINGS\*



**CL88**  
Round, LED spotlights  
The ceiling is a white painted steel sheet  
RAL 9010



**CL94**  
Fluorescent tubes  
The ceiling is a white painted steel sheet  
RAL 9010



**RL20**  
LED light  
The ceiling is a white painted steel sheet  
RAL 9010

\* Please note, that the amount and positioning of led lights is subjected to car dimensions.

## WALLS

### Coated steel



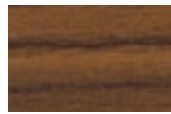
**R31**  
Oak



**R32**  
White Oak



**R33**  
Cherry



**R34**  
Walnut

### Painted steel



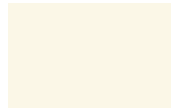
**P57**  
Mandarin Orange



**P58**  
Lime Green



**P59**  
Lotus Blue



**P60**  
Snowberry White

### Stainless steel



**F**  
Asturias Satin



**H**  
Murano Mirror

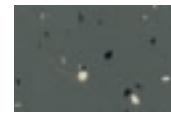


**TS1**  
Flemish Linen

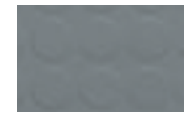
### Rubber



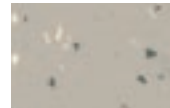
**RC6**  
Dallas Black



**RC20**  
Smoke Gray



**RC21**  
Denver Gray



**RC22**  
Shell Gray

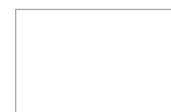


**RC23**  
Coral Red

### Vinyl

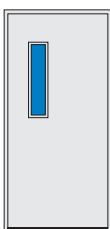


**VF25**  
Flakey Gray

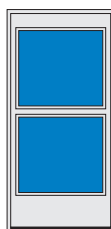


Local flooring

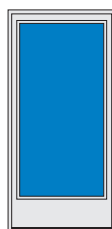
## LANDING DOORS



1c



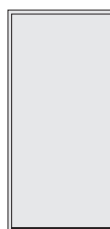
1d



1g



1h



1e

- Landing doors are available with automatic swing door openers. Some door options are fire rated and fire-tested EIW doors.
- Doors are tested based on EN81-20/50 requirements.

## CAR DOORS



Sliding doors minimize the space requirement. The door is anodized aluminum.

# ACCESSORIES AND SIGNALIZATION

## Car operating panels



**KSS 280**  
The control panel in the car can also have Braille numbering.

**KONE Design signalization**  
All solid color options

## Hall indicators



**KSH D20**



**KSS 280**

## Handrails



**HR34**

Round, bent ends  
Aluminum (LBE)  
with black end caps



**HR64**

Round, bent ends  
EN 81-71 Cat 1 compliant  
Finishings:  
Brushed stainless steel (F)  
Mirror polished stainless steel (H)  
Golden brushed stainless steel (SS1)

## Foldable flip seat



**FS4**

## Door handles



The standard material is aluminum.  
Stainless steel and wooden (teak or oak)  
handles are also available. Door can also be  
equipped with an automatic door opener.

## Tenant directory



The printed tenant directory is completely customizable and can be easily updated according to the customer's needs.

**TD1 (A4 size)**  
Frame finishing: brushed or polished aluminum

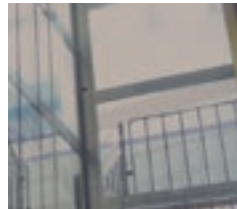
# SHAFT



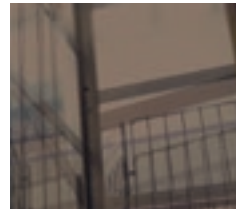
Ocean 1



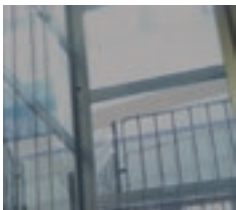
Ocean 2



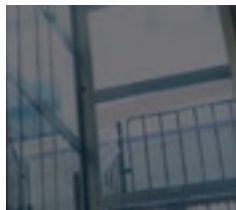
Bronze 1



Bronze 2



Smoke 1



Smoke 2



Frosted 1



Frosted 2



Clear

The shaft glazing is available with several different shades.

## OTHER OPTIONS

- Windows in back and/or side walls of car
- Glass mirrors are available for the elevator car. They can be placed on 3 walls in any combination in cars with a single entrance, and on either side wall on through type elevator cars. EN81-70 compliant.
- Murano mirror wall panels can be used as vandal proof mirrors
- Visual cover plates inside the shaft, under the car and inside door frame
- Extra high doors and car (2100 mm)
- Fire doors
- Fire operation according to EN81-73
- Control panel on bottom floor (up to 10 m travel)
- Push buttons separate from elevator
- Braille control panel
- Voice announcements
- Through-type car with selective/non-selective COP
- Shaft in optional RAL colour
- Key control in car or on landing
- Voice communication with 24-hour KONE Customer Care Center
- Ramp in case of no pit



# AESTHETIC SOLUTIONS FOR ANY BUILDING

With numerous material and color combinations, it's possible to create a unique elevator interior that matches for buildings of all ages and designs.



**10011**  
FRESH &  
FUNCTIONAL

**Ceiling**  
CL94

**Walls**  
Snowberry White (P60)  
Flemish Linen (TS1)

**Floor**  
Shell Gray (RC22)

**Signalization**  
KSS 280

**Mirror**  
Partial height, glass

**Handrail**  
HR34



**10012**  
FRESH &  
CASUAL

**Note:**  
This car is a through-type car, and wall material Mandarin Orange (P57) is not applicable for the C-wall, because of the other car door. This car design is also available as a Single Entrance car, in which case the C wall would have the Mandarin Orange (P57) as well.

**Ceiling**  
RL20

**Walls**  
Mandarin Orange (P57)

**Floor**  
Smoke Gray (RC20)

**Signalization**  
KSS 280

**Mirror**  
Partial height, glass

**Handrail**  
HR34



**10013**  
CLASSIC &  
COSY

**Ceiling**  
CL88

**Walls**  
Oak (R31)  
Murano mirror (H)

**Floor**  
Shell Gray (RC22)

**Signalization**  
KSS 280

**Handrail**  
HR64



**10014**  
CLASSIC &  
WELCOMING

**Ceiling**  
RL20

**Walls**  
Walnut (R34)  
Murano Mirror (H)

**Floor**  
Flakey Gray (VF25)

**Signalization**  
KSS 280

**Handrail**  
HR34

**Note:**  
For interior 11011 Fresh and functional, the wall material under the horizontal trim is always TS1.

# KEY FEATURES AND DIMENSIONS

## SPECIFICATIONS

- Travel: max 30 m
- Speed: 0.6 m/s
- Stops: 2 - 12
- Rated load: max 675 kg or 9 persons
- Headroom: min 2500 mm, full 3500 mm
- Pit: min 100 mm, full 1000 mm
- Use of minimum pit and headroom according to national regulations
- Compliant with the European elevator standards EN81-20 and EN81-50
- Gearless motor: Power 8.0 kW, 16 A fuse
- Voltage: 3 phase, 400 V, 50 Hz
- Power: 8.0 kW, 16 A fuse
- Doors: automatic car doors, swing doors on landings with an optional automatic swing door opener
- Shaft: Steel or glass
- Two-way voice connection to 24h KONE Customer Care Center with KONE Voice Link™ Service

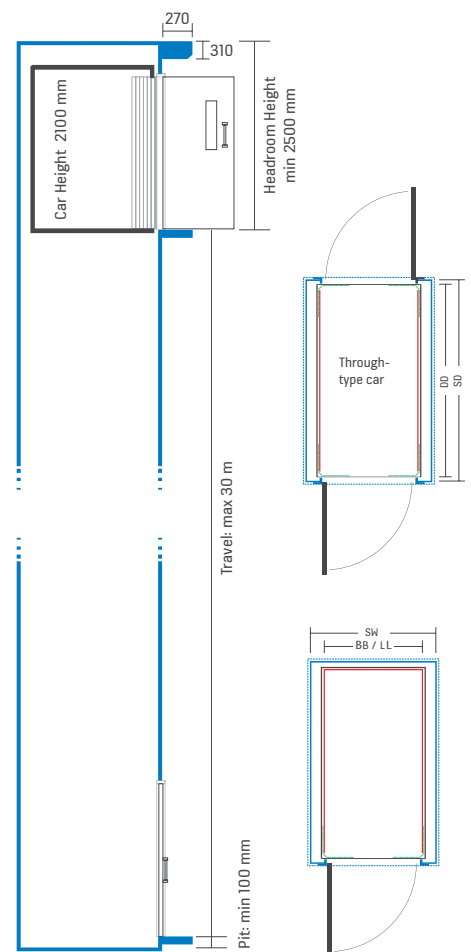
KONE ProSpace™ Standard dimensions\*

External shaft depth (mm)	External shaft width (mm)								
	750	800	850	900	950	1000	1100	1200	1300
1000	•								
1050	•	•							
1100	•	•	•	•					
1150	•	•	•	•					
1200	•	•	•	•	•			•	
1250	•	•	•	•	•	•	•	•	•
1300	•	•	•	•	•	•	•	•	•
1350	•	•	•	•	•	•	•	•	•
1400	•	•	•	•	•	•	•	•	•
1450	•	•	•	•	•	•	•	•	•
1500	•	•	•	•	•	•	•	•	•
1550	•	•	•	•	•	•	•	•	•
1600	•	•	•	•	•	•	•	•	•
1650	•	•	•	•	•	•	•	•	•
1700	•	•	•	•	•	•	•	•	•
1750	•	•	•	•	•	•	•	•	•
1800	•	•	•	•	•	•	•	•	•
1850	•	•	•	•	•	•	•	•	•
1900	•	•	•	•	•	•	•	•	•
1950	•	•	•	•	•	•	•	•	•
2000	•	•	•	•	•	•	•	•	•
2050	•	•	•	•	•	•	•	•	•
2100	•	•	•	•	•	•	•	•	•
2160	•	•	•	•	•	•	•	•	•

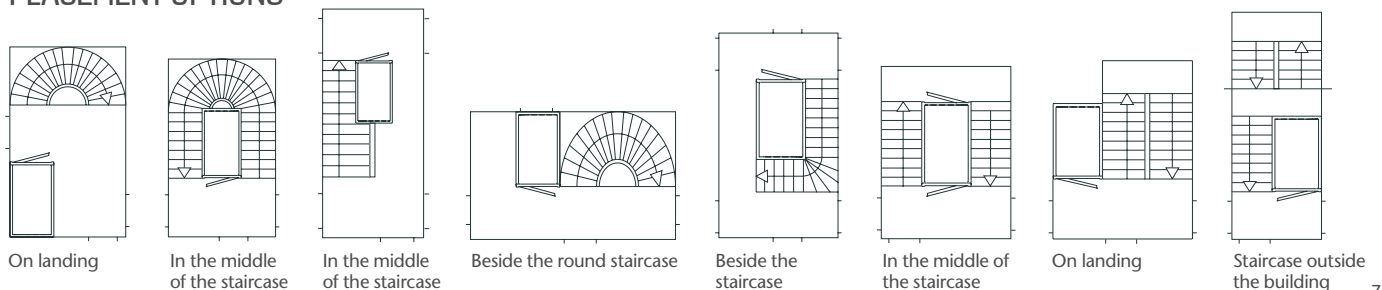
- Car internal width = Shaft external width - 200 mm.
- Car internal depth = Shaft external depth - 150 mm.
- Well = Shaft external + 30 mm.
- Door width = Car width up to the car width of 900 mm, cars with bigger car width has either 900 mm (standard) or 1000 mm (option) doors (some exceptions exists).
- Car height is 2100 mm and door height 2000 mm.
- The blue marked areas in the table are not available with reduced pit (100 mm).
- Through-Type-Car (TTC) is available for all the dimension when delivered with 1000 mm pit.
- TTC with reduced pit (100mm) is available for shaft depths 1650 mm and larger.
- TTC is available for all the dimensions in the cases where one of the sides have only one door either on topmost or lowest stop

\* Valid when EN81-21 is applicable, contact your local sales representative for other options

## SHAFT DIMENSIONS



## PLACEMENT OPTIONS



KONE provides innovative and eco-efficient solutions for elevators, escalators, automatic building doors and the systems that integrate them with today's intelligent buildings.

We support our customers every step of the way; from design, manufacturing and installation to maintenance and modernization. KONE is a global leader in helping our customers manage the smooth flow of people and goods throughout their buildings.

Our commitment to customers is present in all KONE solutions. This makes us a reliable partner throughout the life cycle of the building. We challenge the conventional wisdom of the industry. We are fast, flexible, and we have a well-deserved reputation as a technology leader, with such innovations as KONE MonoSpace®, KONE NanoSpace™ and KONE UltraRope®.

KONE employs close to 50,000 dedicated experts to serve you globally and locally.

**KONE Corporation**  
**[www.kone.com](http://www.kone.com)**